

Digital Die Cut Machine



IMS Department is proud to present teachers with a new resource for their classroom needs, we have purchased a new **Digital Die Cut machine!**

The Digital Die Cut machine is very similar to the "Cricut", but uses software specifically designed with schools in mind. This machine will cut out items as small as 1" and as large as 17.5". It offers a large variety of design templates (172 collections), digital dies (3800 shapes), and has 14 different fonts for words/letters.

The machine is very delicate, so teachers must be trained on how to use this very special piece of equipment. Training for using the Digital Die Cut machine will be made with a member of the IMS Staff, and 1 session is required prior to teachers being allowed to operate the machine alone. The machine is located in the JAESC in the "K-12 Textbook Library", it's the small room right across from the elevator on the 2nd floor.

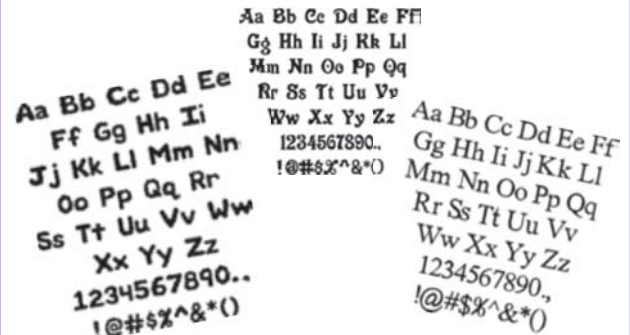
To be trained, please make an appointment by emailing imsrequest@lodiussd.net and an IMS Staff person will confirm the appointment with you. You may also call x17237 (or Jive #813002) to make an appointment over the phone.

Can't wait to see you there!

Sample Bulletin Boards:



Sample Letters/Fonts:



Sample Dies/Shapes:

