



730 Howe Avenue, Suite 450  
Sacramento, CA 95825  
Phone: 916.921.2112  
Fax: 916.921.2212



May 5, 2019

**Henry + Associates Project No. 19-32-048**  
DSA File No. 39-50  
DSA Application No. 02-117640

**ADDENDUM NO. 01**  
**RELOCATABLE RELOCATION**  
**LODI MIDDLE SCHOOL**  
Lodi Unified School District

.....  
Henry + Associates

1. ALL WORKMANSHIP, MATERIALS, APPLIANCES AND EQUIPMENT which may be included in the following items shall be the same relative quality as described for similar work set forth in the original or main specifications of which these Addendum items shall be considered a part.
2. ADDENDUM DRAWINGS (included in the back of this Addendum).  
The following Addendum drawings modify or supplement the issued bid documents:  

AD1.01	REVISION TO SHEET A1.2
AD1.02	REVISION TO SHEET C2.1
AD1.03	REVISION TO SHEET E1.1
AD1.04	REVISION TO SHEET E2.1

3. PROJECT MANUAL:

A. None.

4. DRAWINGS:

A. Sheet A1.2: Revise per Addendum Drawing AD1.01

B. Sheet C2.1: Revise per Addendum Drawing AD1.02.

C. Sheet E1.1: Revise per Addendum Drawing AD1.03.

D. Sheet E2.1: Revise per Addendum Drawing AD1.04.

4. OTHER:

A. Sign in sheet from Mandatory Pre-Bid Meeting is attached.

\* \* \* END OF ADDENDUM \* \* \*



730 Howe Avenue, Suite 450  
 Sacramento, CA 95825  
 Phone: 916.921.2112  
 Fax: 916.921.2212

May 1, 2019

Sign-In Sheet

**Mandatory** Pre-Bid Meeting

Relocatable Relocation Lodi Middle School

Lodi Unified School District

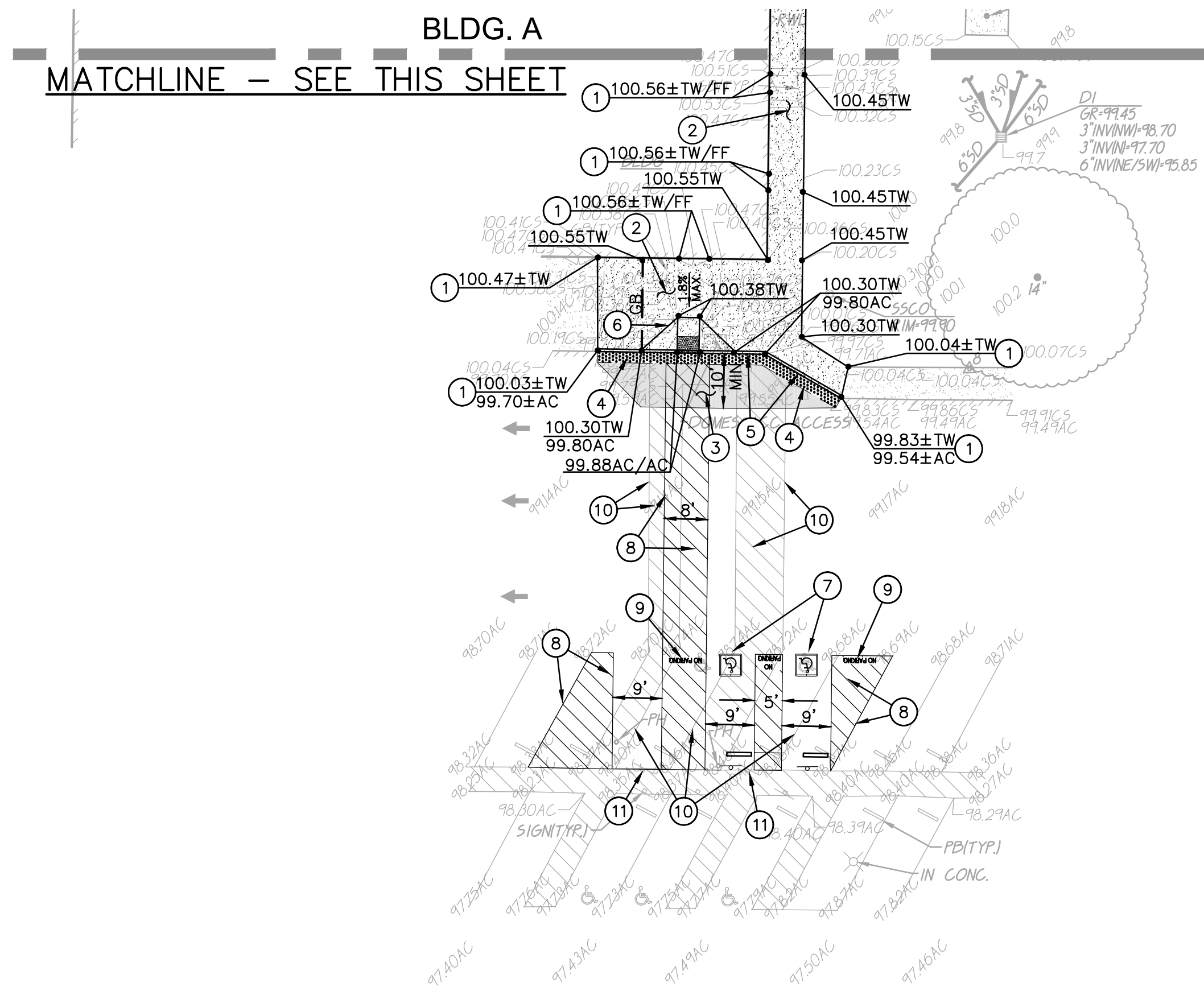
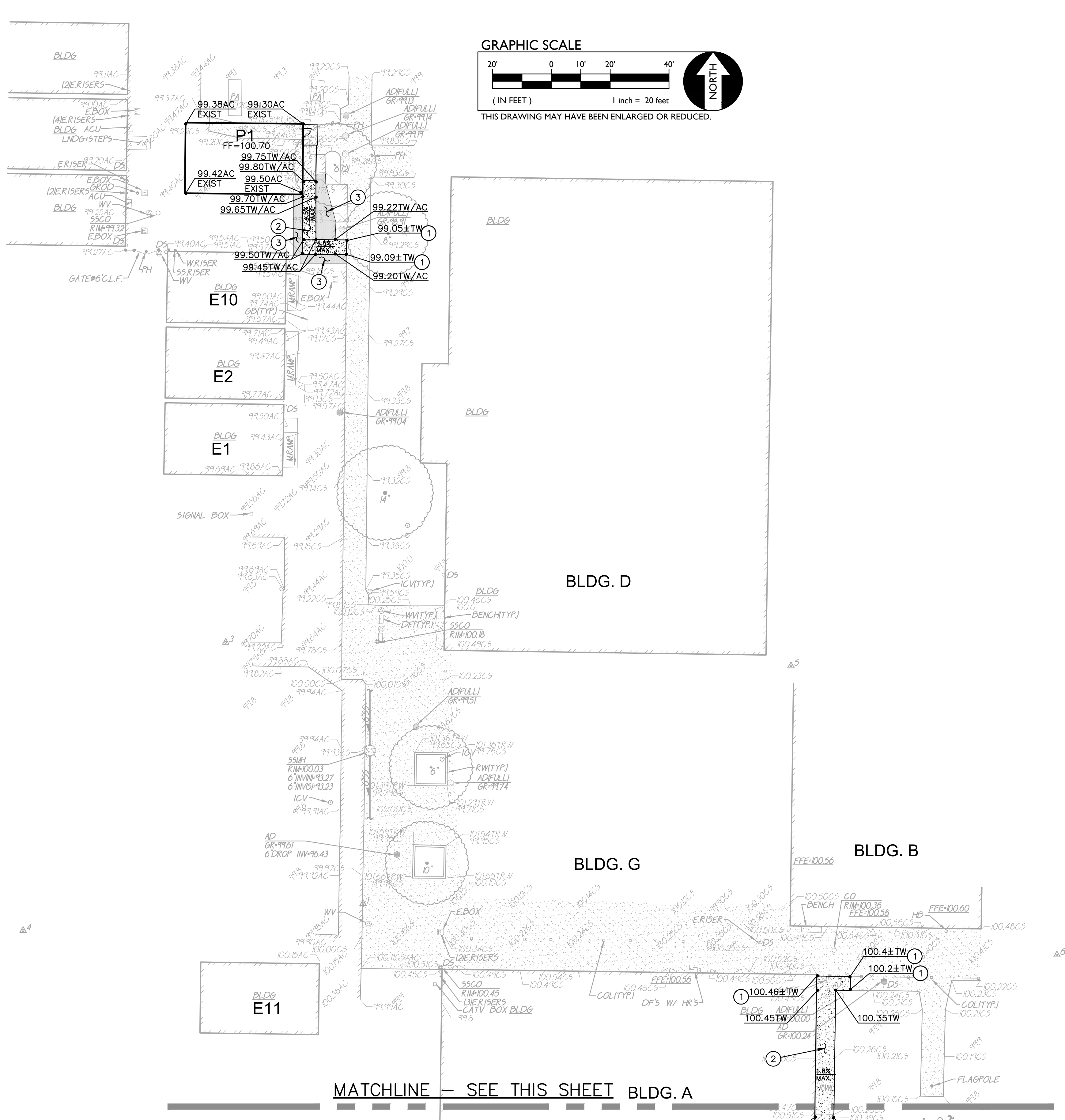
	Name	Company	Phone/Fax	Email
1	Stephen Henry	Henry + Associates	916-799-3027	<a href="mailto:stephen@henry-architects.com">stephen@henry-architects.com</a>
2	KEN RUSH	SCHROEDER & BRANDT	530-899-1104	BID @ SCHROEDER AND BRANDT.COM
3	TROY DECK	DECK CONSTRUCTION	209-369-8255	ESTIMATING @ DECKCONSTRUCTION.COM
4	George Raley	T+S	(209) 652-7811	estimating @ tandsinc.us
5	MARC KARIM	LUUSD	209-224-6053	MKARIM@LODIUSD.NET
6	Joe Patty	LUUSD	209-712-6363	JPATTY@LODIUSD.NET
7	KATHIE MADZIER	LUUSD	209 331-7225	KMADZIER@LUUSD.NET
8	VICKIE BRUM			
9				







FILENAME: I:\19-029\CIVIL\DWG\19-029C2.1.DWG



- GRADING NOTES
1. MATCH EXISTING GRADE.
  2. SAWCUT REMOVE AND REPLACE CONCRETE WALK PER  $\frac{2}{C3.1}$
  3. PROVIDE 1.5" MIN. AC OVERLAY. GRIND AT LIMITS TO PROVIDE MINIMUM SECTION.
  4. SAWCUT REMOVE AND REPLACE AC PAVING AS NECESSARY FOR NEW WALK.
  5. CONSTRUCT CONCRETE CURB PER  $\frac{6}{C3.1}$
  6. CONSTRUCT CURB RAMP PER  $\frac{4}{C3.1}$
  7. PROVIDE ADA PARKING STALLS PER  $\frac{3}{C3.1}$
  8. PROVIDE 4" WIDE WHITE STRIPING, WHITE BORDER WITH ANGLED STRIPING PER 3/C3.1.
  9. PROVIDE "NO PARKING" PER 3/C3.1.
  10. BLACK OUT ALL EXISTING STRIPING.
  11. REMOVE EXISTING SIGN AND POST. CUT POST FLUSH WITH SURFACE AND GROUT HOLE FLUSH.

FILE NO. 39-50 APP NO.

730 Howe Avenue, Suite 450  
Sacramento, CA 95825  
Phone: 916.921.2112  
Fax: 916.921.2212



RELOCATABLE RELOCATION  
LODI MIDDLE SCHOOL

GRADING PLAN

LODI UNIFIED SCHOOL DISTRICT, LODI, SAN JOAQUIN COUNTY, CALIFORNIA

CONSULTANT



PROJECT NO.	REVISIONS	BY
19-32-048		
DATE		
04/05/2019		
DRAWN		
MG		
CHECKED		
MG		
SCALE		
CADFILE		
UPDATED		

SHEET NO.

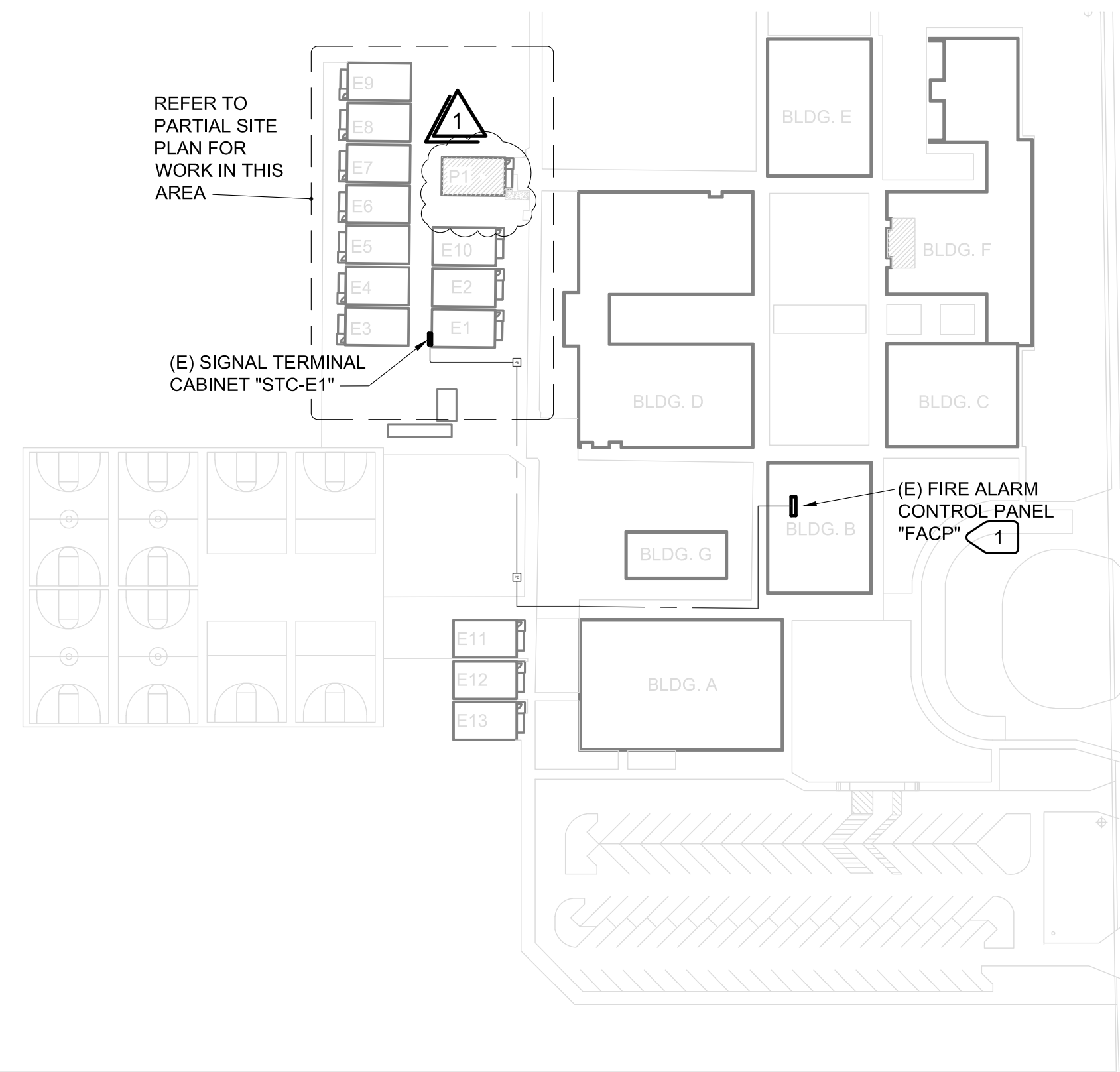
C2.1

OF - SHEETS





2 PARTIAL SITE PLAN - ELECTRICAL  
E1.1 SCALE : 1" = 10'-0"



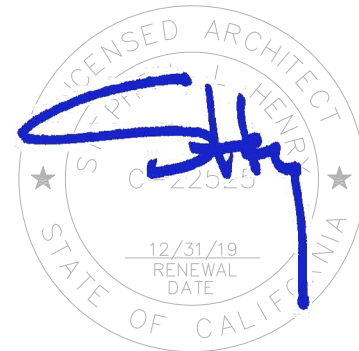
1 SITE PLAN - ELECTRICAL  
E1.1 SCALE : 1" = 80'-0"

- NUMBERED NOTES:
- 1 PROGRAM FACP FOR NEW ADDED DEVICES.
  - 2 PROVIDE (N) 125/2 CKT. BRKR. IN (E) SPACES. PROVIDE ALL HARDWARE AND TRIM PIECES FOR COMPLETE INSTALLATION.
  - 3 1-1/2"C-3#1, 1#6G. RUN CONDUIT U.G. CAREFULLY EXCAVATE IN THIS AREA. PRIMARY FOR THE TRANSFORMER MAY BE LOCATED HERE.
  - 4 RISE 1-1/2"C-3#1, 1#6G ON THE SIDE OF THE BUILDING. USE RIGID STEEL CONDUIT.
  - 5 RUN HIGH ON BUILDING, COORDINATE WITH OTHER EQUIPMENT.
  - 6 SPAN SPACE BETWEEN BUILDINGS USING LIQUIDTIGHT FLEX CONDUIT.
  - 7 CONNECT POWER PANEL PROVIDED WITH BUILDING. COORDINATE EXACT REQUIREMENTS IN FIELD.
  - 8 (9) (N) DATA CABLES (CAT6a) NEED TO BE ADDED TO (E) IDF. INSURE THAT THERE IS ADEQUATE SPARE PATCH PANEL. OR PROVIDE ADDITIONAL PATCH PANEL. INSURE THAT TWO (2) DATA DROPS ARE Pol.
  - 9 (9) (N) DATA CABLES, REFER TO SPECIFICATIONS FOR CABLE COLORS. RUN IN ACCESSIBLE ABOVE CEILING SPACE SUPPORTED BY J-HOOKS. PROVIDE 2"C THROUGH INACCESSIBLE ABOVE CEILING SPACE.
  - 10 SPAN SPACE BETWEEN PORTABLES WITH 2" LIQUIDTIGHT FLEX CONDUIT FOR (N) DATA CABLES.
  - 11 BRING 1-1/2"C-3#1, 1#6G FROM HIGH ON BUILDING DOWN WALL, THAN UNDERGROUND. USE RIGID STEEL CONDUIT FOR RISER.
  - 12 PROVIDE NEMA 3R ENCLOSURE WITH SCREW COVER, 8"X8"X4". MOUNT HIGH ON WALL SUCH THAT 2" SLEEVE ENTERS BOX STRAIGHT FROM ABOVE CEILING SPACE. BOX IS USED AS PULLBOX, DO NOT TERMINATE CABLES IN THESE BOXES.
  - 13 BRING 2"C WITH (N) DATA CABLES, AND 1"C WITH FA CABLES PER FIRE ALARM RISER DIAGRAM, DOWN WALL, THAN UNDERGROUND. BRING 2"C AND 1"C UP WALL OF NEW BUILDING AND TERMINATE IN NEW WALL MOUNTED BOX. USE RIGID STEEL CONDUIT FOR RISERS.

M. NEILS  
ENGINEERING, INC.  
Electrical Engineers | Lighting Designers  
100 Howe Ave., Suite 235N  
Sacramento, CA 95825-6217  
www.mneilsengineering.com  
Tel: (916) 923-4400 Fax: (916) 923-4410  
PROJECT #: 19045.21

FILE NO. 39-50 APP NO.

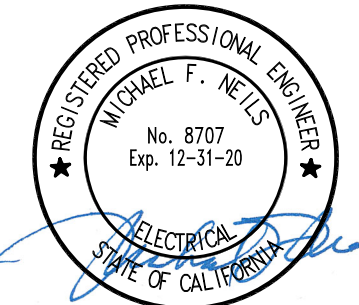
730 Howe Avenue, Suite 450  
Sacramento, CA 95825  
Phone: 916.921.2112  
Fax: 916.921.2212



RELOCATABLE RELOCATION  
LODI MIDDLE SCHOOL

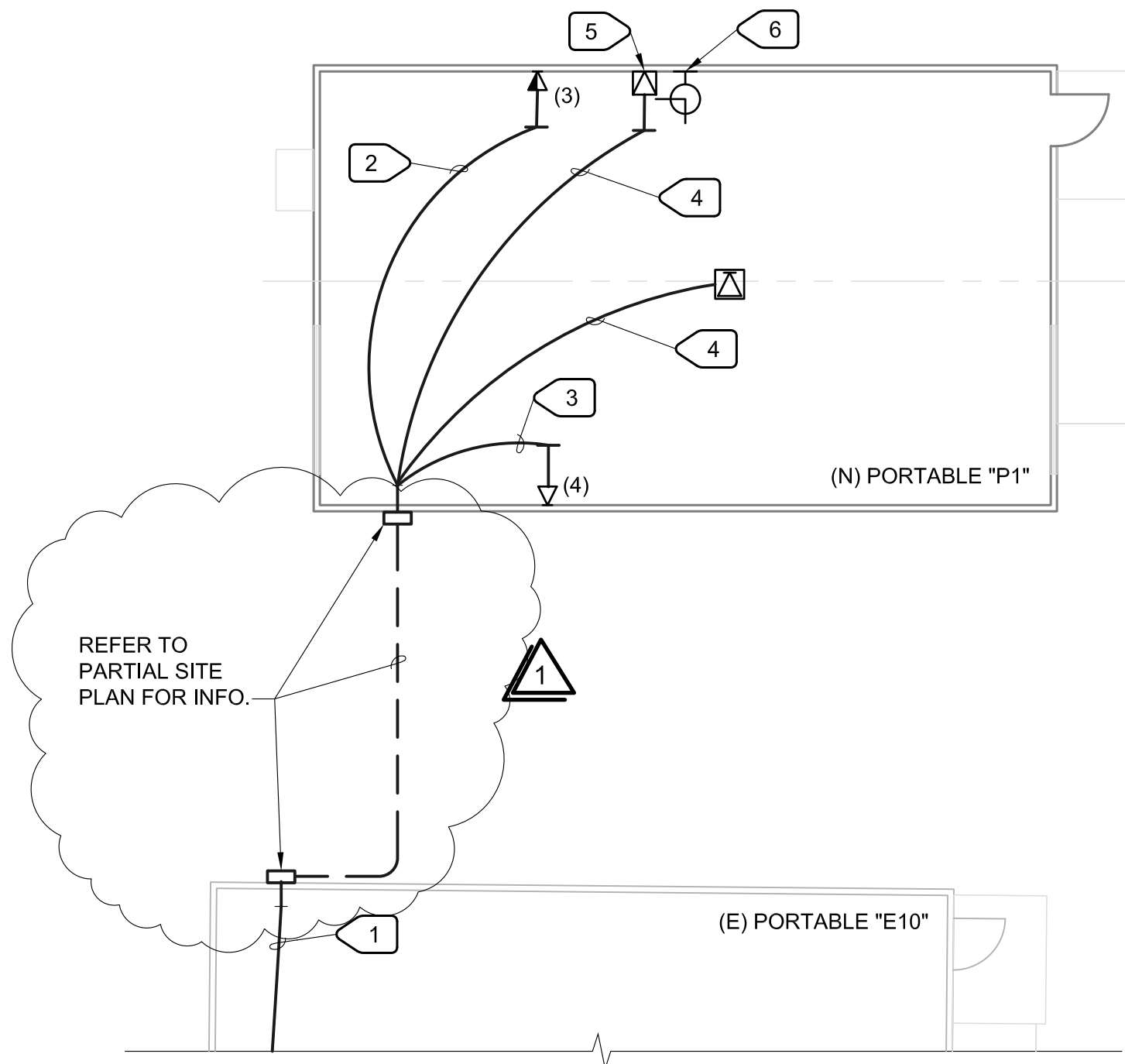
SITE PLANS - ELECTRICAL

CONSULTANT



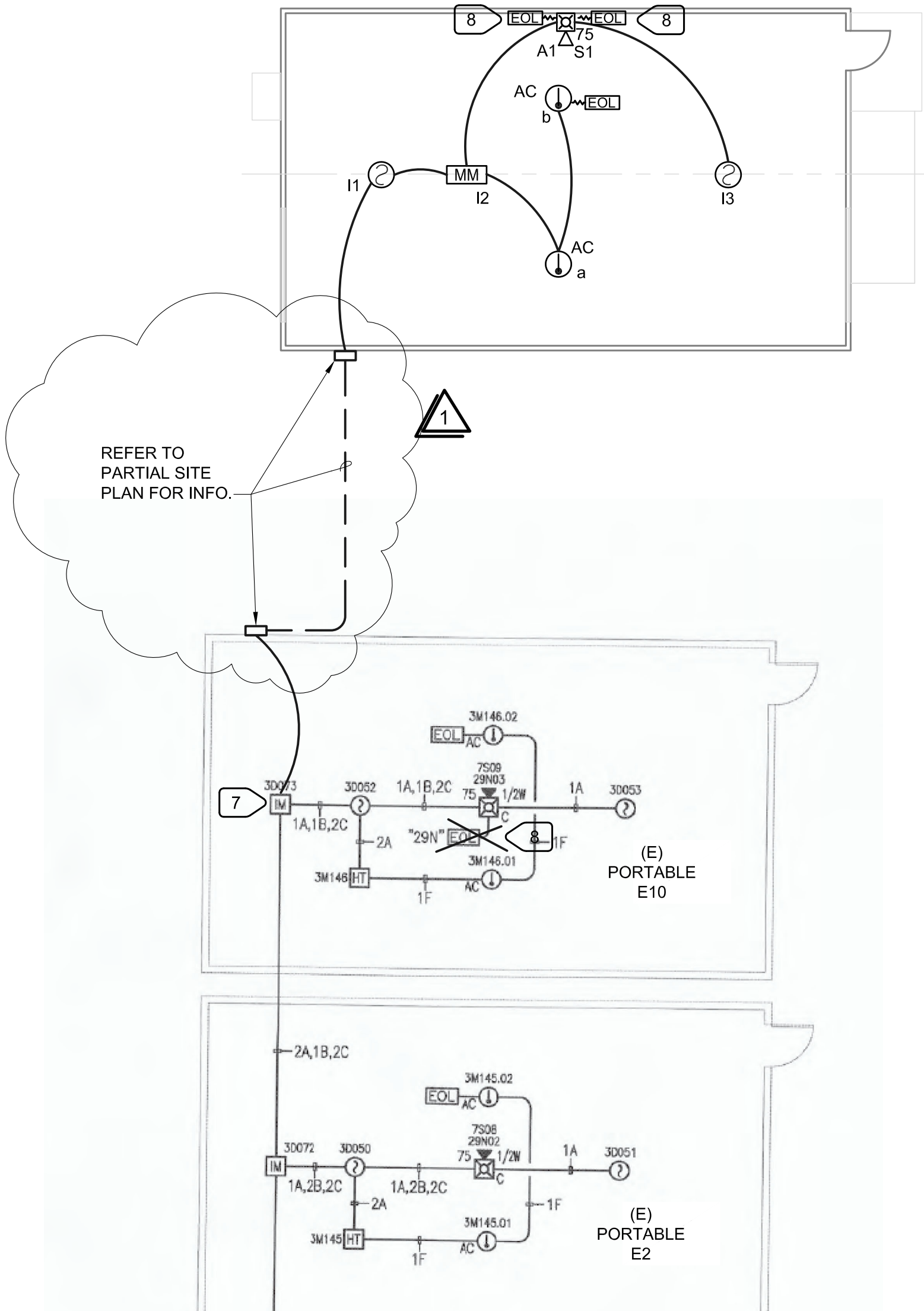
PROJECT NO.	REVISIONS	BY
19-32-048		
DATE	ADDENDUM #1	
03/29/2019	4/24/2019	
DRAWN		
SG		
CHECKED		
SG		
SCALE		
CADFILE		
UPDATED		

SHEET NO. **ADD1**  
**E1.1**  
OF 102 SHEETS



1 FLOOR PLAN - SIGNAL  
E2.1 SCALE : 1/8" = 1'-0"

DATA OUTLETS - COLOR CODING	
<input checked="" type="checkbox"/>	(1) WHITE JACK FOR WAP
<input checked="" type="checkbox"/>	(1) GREEN JACK FOR VOIP SPEAKER
<input type="checkbox"/> (4)	(4) BEIGE JACKS FOR STUDENT COMPUTERS
<input type="checkbox"/> (3)	(2) BEIGE JACKS AND (1) BLUE JACK FOR TEACHER LOCATION (COMPUTER + VOICE)



(E) PORTABLES ARE SHOWN FROM THE SET OF DSA APPROVED PLANS, APPL. #02-116554, DATED 06-21-2018

2 FLOOR PLAN - FIRE ALARM  
E2.1 SCALE : 1/8" = 1'-0"

NUMBERED NOTES:

- (9) (N) INCOMING DATA CABLES. REFER TO PARTIAL SITE PLAN - ELECTRICAL.
- (3) (N) DATA CABLES TO TEACHER DATA OUTLET LOCATION. STUB 1"C INTO ACCESSIBLE ATTIC SPACE.
- (4) (N) DATA CABLES TO STUDENT DATA OUTLET LOCATION. STUB 1"C INTO ACCESSIBLE ATTIC SPACE.
- (1) (N) DATA CABLE TO VOIP SPEAKER / WIRELESS ACCESS POINT. STUB 3/4"C INTO ATTIC SPACE FROM SPEAKER BACKBOX INTO ACCESSIBLE ATTIC SPACE.
- PROVIDE IP SPEAKER TO MATCH (E) ON SITE.
- PROVIDE 12" BATTERY OPERATED CLOCK, ARABIC NUMERALS, BLACK HOUR AND MINUTE HANDLE, RED SECOND HANDLE, MIN. 5 YEARS BATTERY PACK, RADIO SYNCHRONIZED.
- EXTEND (E) INITIATION CKT, NOTIFICATION VISUAL, AND NOTIFICATION AUDIO CKTS.
- RELOCATE (E) END-OF-LINE RESISTOR FROM HERE TO (N) PORTABLE AS SHOWN.

FILE NO. 39-50 APP NO.

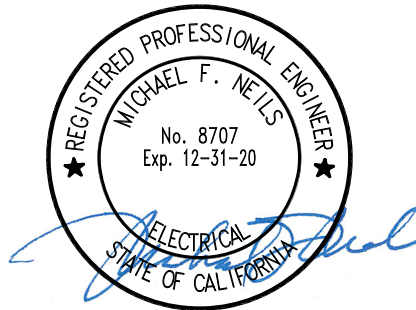
730 Howe Avenue, Suite 450  
Sacramento, CA 95825  
Phone: 916.921.2112  
Fax: 916.921.2212



RELOCATABLE RELOCATION  
LODI MIDDLE SCHOOL

FLOOR PLANS -  
FIRE ALARM AND SIGNAL

CONSULTANT



PROJECT NO.	REVISIONS	BY
19-32-048		
DATE	ADDENDUM #1	
03/29/2019	4/24/19	
DRAWN		
SG		
CHECKED		
SG		
SCALE		
CADFILE		
UPDATED		

SHEET NO.

ADD1  
E2.1

OF 102 SHEETS